



OAKFIELD



Flat 73, 5 Martin Court, Hastings, TN34 1EF

£1,700 Per Calendar Month



## Flat 73, 5 Martin Court, Hastings, TN34 1EF

An exceptional top-floor penthouse offering private outdoor space, far-reaching views and refined contemporary living, positioned moments from the station. One of only three remaining homes within the exclusive Station Plaza Penthouse Collection. This stunning home combines modern design, panoramic views, and unbeatable convenience for contemporary town-centre living and only steps from the mainline station with links to London, Gatwick and Brighton.

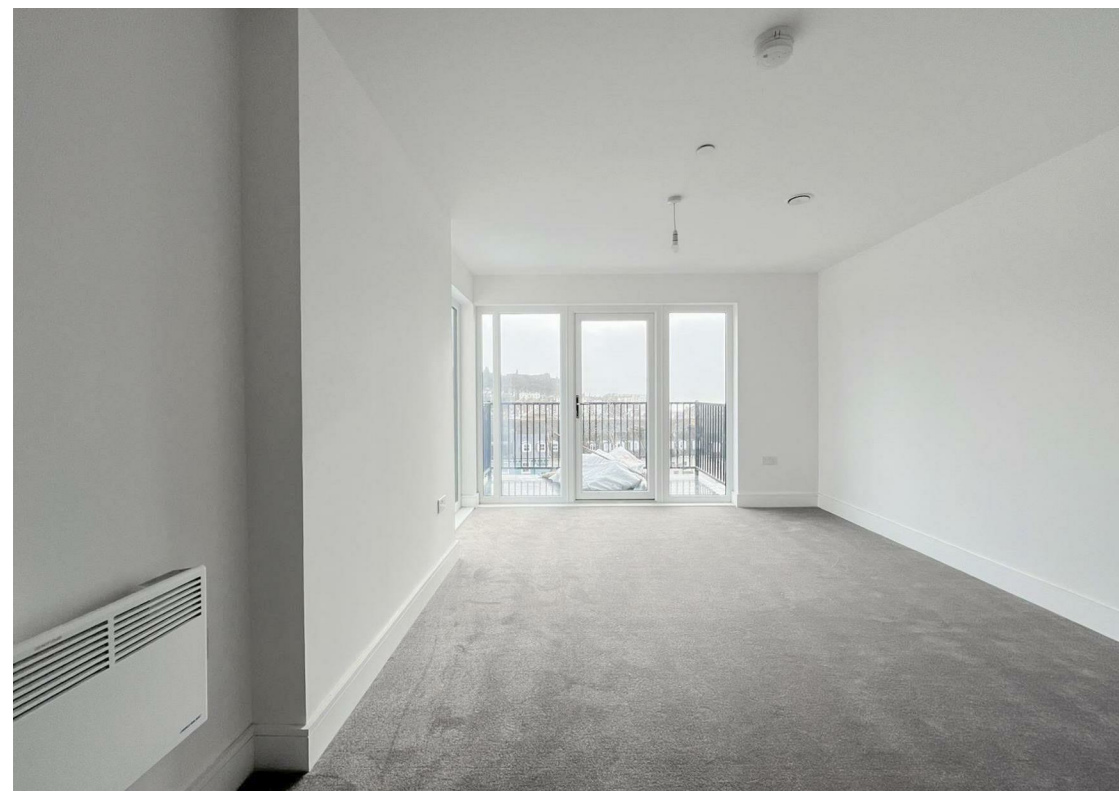
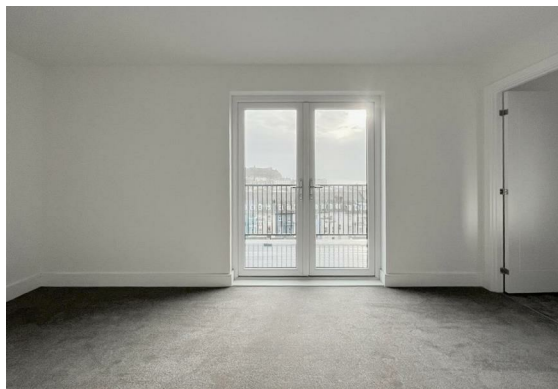
Situated on the sixth floor and accessible via both lift and stairs, this spacious penthouse enjoys breath taking views across the town and out to sea from floor-to-ceiling glazing. Offering generous proportions and stylish finishes, it's perfect for couples seeking refined living space or families looking for something truly unique.

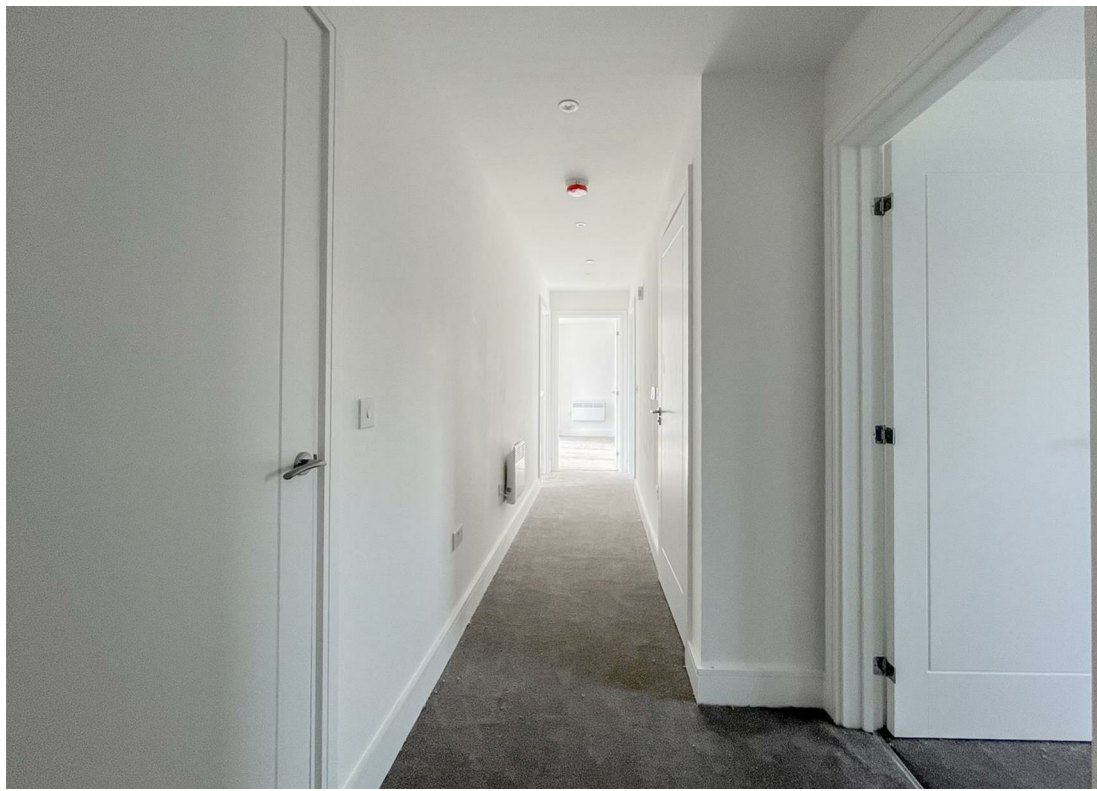
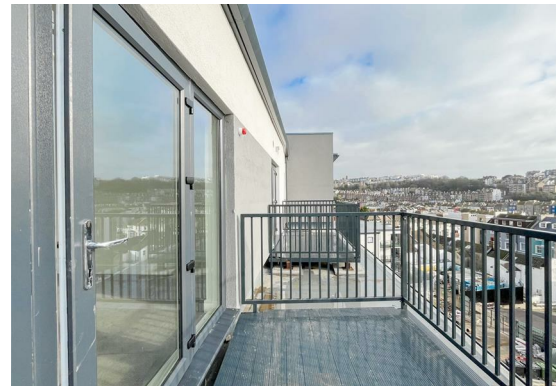
The open-plan living area features a modern fitted kitchen complete with integrated appliances, including a dishwasher, washing machine, and fridge-freezer. The living space enjoys access to a balcony ideal for entertaining or relaxing with the view.

The master bedroom is a generous double with its own balcony and a en-suite shower room. Two additional bedrooms and a family bathroom with bath and overhead shower complete the accommodation.

Additional Features include secure underground parking with one allocated space and the option to rent a second space for £25 per month. There is modern electric heating and double glazing throughout

With its prime location, premium specification, and limited availability, this outstanding penthouse offers an exclusive lifestyle opportunity that's not to be missed.





Station Plaza has been designed with residents' lifestyles in mind. The development is pet-friendly and includes digital on-site parcel lockers to ensure deliveries are safe and convenient. Security and peace of mind are a priority with secure gated entry, and a private underground car park where each flat can benefit from an allocated space for just £25 per month, in addition to secure bike storage.

Residents will also enjoy access to a range of exclusive on-site amenities, including a cinema room. More information on Station Plaza and what this sought after new development offers can be found on their website <https://www.stationplazahastings.co.uk/>

### Living Room / Kitchen / Dining Area

109'6" m sq (33.4 m sq)

### Bedroom One

53'5" m sq (16.3 m sq)

### Ensuite

14'1" m sq (4.3 m sq)

### Bedroom Two

26'2" m sq (8 m sq)

### Bedroom Three

44'7" m sq (13.6 m sq)

### Bathroom

20'4" m sq (6.2 m sq)

### Balcony One

### Balcony Two

### Storage cupboard

6'6" m sq (2 m sq)

### Storage cupboard

2'7" m sq (0.8 m sq)

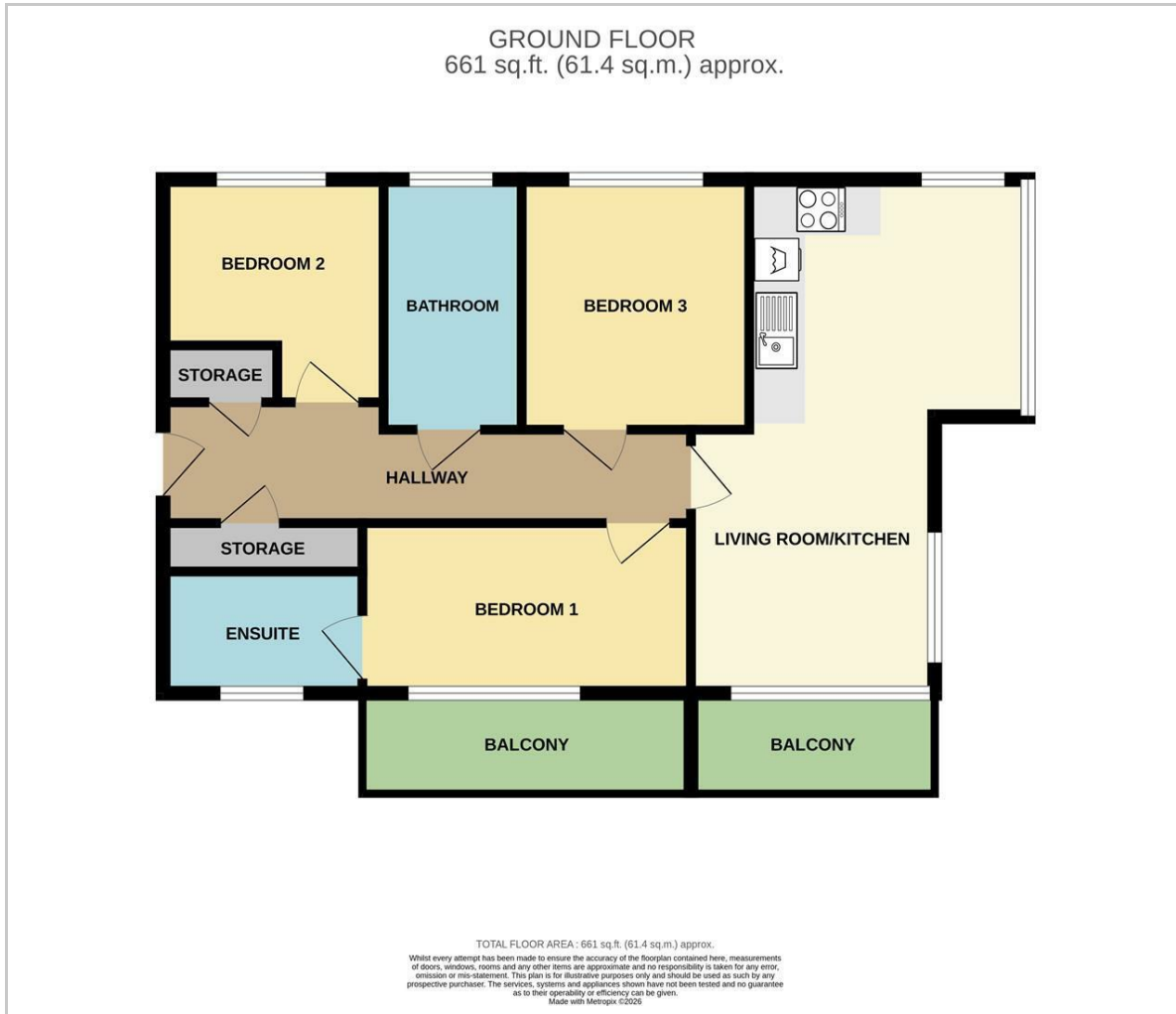
### Total Floor Area Approx 99.3 m sq

### Council Tax Band to be confirmed

### Please note

The show flat photographs, computer-generated images (CGIs), and illustrations are provided for illustrative purposes only. They are intended to give a general impression of the development and may include features, finishes, furnishings, and fittings that do not form part of the standard specification. Actual layouts, dimensions, materials, and finishes may vary. All information is subject to change without notice and does not constitute a contract, representation, warranty, or guarantee.

## Floor Plan

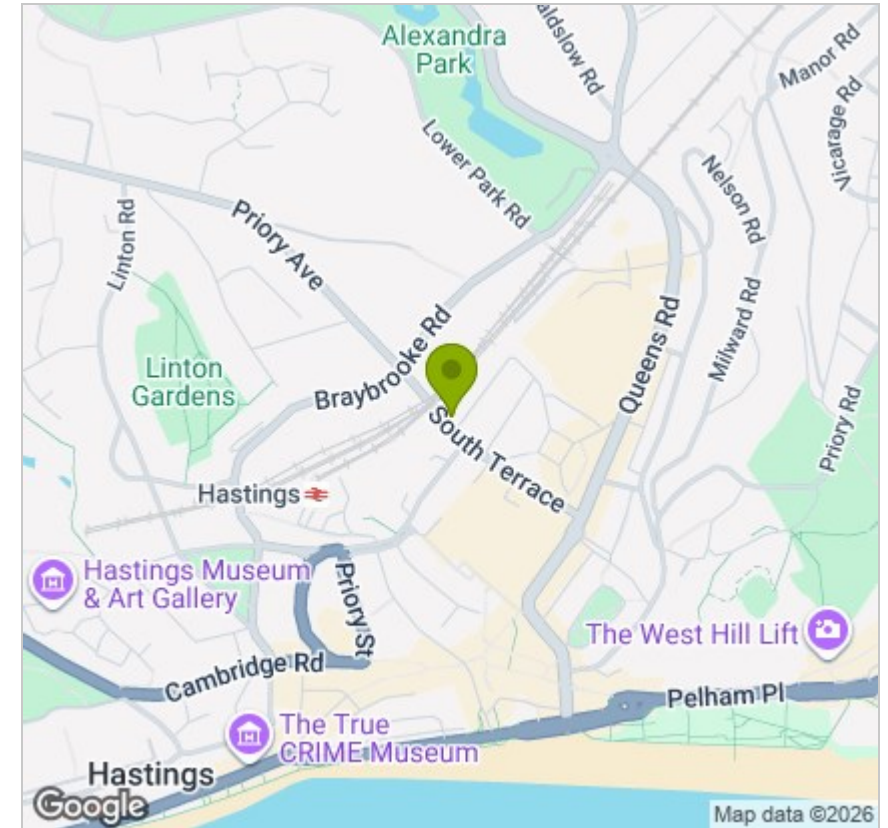


## Viewing

Please contact us on 01424 446644 if you wish to arrange a viewing appointment for this property or require further information.

These particulars, whilst believed to be accurate are set out as a general outline only for guidance and do not constitute any part of an offer or contract. Intending purchasers should not rely on them as statements of representation of fact, but must satisfy themselves by inspection or otherwise as to their accuracy. No person in this firm's employment has the authority to make or give any representation or warranty in respect of the property.

## Area Map



## Energy Efficiency Graph

